



RBYC Race Management Tool Buoy Zone



https://play.google.com/store/apps/details?id=dev.featurehub.buoy_zone&hl=en

Race
Officer – Page 2



<https://www.google.com/url?q=https%3A%2F%2Fapps.apple.com%2Fau%2Fapp%2Fbuoyzone%2Fid1467318416&sa=D&sntz=1&usg=AFQjCNEZRRFgblbDXQtnwwPnhGGrBaNg>

Mark Layer – Page 6



How to get started with Buoy Zone – Race Officer

Create an account

Step 1 of 2

Sign in with Google

Or register with email and password

Email

Password

Confirm password

CANCEL REGISTER

Step 2 of 2

Name

Email
testname@testemail.com.au

EMAIL NOT VERIFIED

RESEND VERIFICATION EMAIL

Country

Search for your club

Royal Brighton Yacht Club

Short distance units

Feet Yards Meters

Long distance units

Kilometers Miles Nautical Miles

Delete my account

CANCEL UPDATE

- Download the app “Buoy Zone” from app store.
- Register using your Google or Apple account – or create a new account.

- Input your personal Details.
- Search for RBYC and link your account to the club.

Create a new course

RM RBYC

Buoy Zone
RACE COURSES MADE EASY

JOIN A COURSE

Support boats

MANAGE A COURSE

Race Officer

2.6.0 (258)

My Courses

No courses found.

Create course

Changing the host club here makes it only visible to members of this club, when shared.

Host country
Australia

Host Club
Royal Brighton Yacht Club

Create a new course code. When you share your course it will automatically be visible to club members at (RBYC). If a support boat is from a different club simply share this code with them.

Course Code *
RBYCTEST

Club course template
No club templates available

CANCEL NEXT

- Create a new racecourse by clicking “Manage a Course”.

- Add a new racecourse. Select Plus Sign.

- Fill in the host club.
- Define a course name that can be easily recognised.



How to set up a new racecourse - Course axis and size

Enter the course axis.

Start vessel location can be updated with the current vessel location as long as racecourse is not yet finalised. After finalising the racecourse please choose "Manual course location" so that the start vessel location does not change, if the start vessel swings or let 'out more anchor.

Select "Select on Map" or Enter Lat. & Long.

Course settings
Royal Brighton Yacht Club

General Settings

Course axis (*M) 180 Course size (nm) 0.8

Start-line length (m) 150 Start pin bias 0°

Start boat location
Manual course location

Manual location is not recommended when laying a course

SELECT ON MAP

SHOW LESS

Deg° Mins ☒ Decimal Deg°

Latitude DD.DDDD' -37.898785 10/11

Longitude DD.DDDD' 144.977662 10/11

GENERAL ☒ ADVANCED

Enter the course size (nm) and the length of the start-line (m) depending on the wind conditions and the boat types.

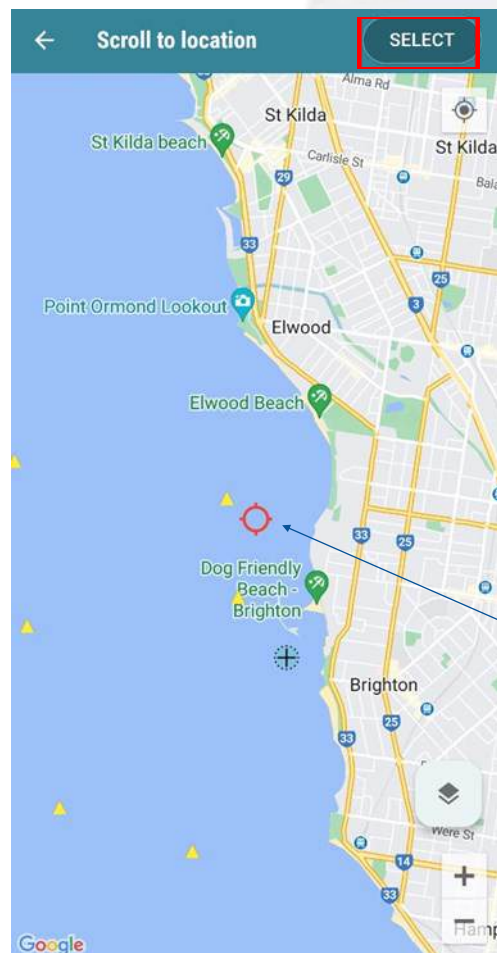
The start pin bias can be between +15° and -15°.

Update with my current location

Manual course location



How to set up a new racecourse – Advance Settings



Choose the designated course type.

Select the settings for top mark 1, mark 1A and the extra top mark mark X1.

Drag the map to locate the indicator in desired location, then press the select button

Course settings
Royal Brighton Yacht Club

Advanced Settings

Course Type
Windward Leeward

Mark 1 Setting
Mark Gate

Add 1A Mark
No Yes

1A Mark distance (m)
60

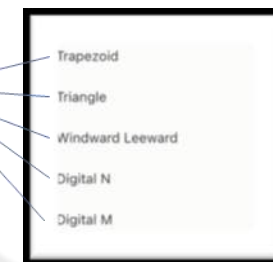
1A Mark angle °
-100

Add Extra Top Mark X1
No Yes

X1 length (% of course size)
75

(X1 Course size: 0.6nm)

Extra Top Mark X1 Type
Mark Gate





How to set up a new racecourse - Advanced Settings Cont.

Select the settings for the bottom mark.

Select the locations of start-line and finish-line.

Selecting Manual allows you to adjust distance to finish line.

Enter the length of the finish line, the gate width and the gate distance.

Course settings
Royal Brighton Yacht Club

(X1 Course size: 0.6nm) 2/4

Extra Top Mark X1 Type
☒ Mark ☐ Gate

Add XA Mark
☒ No ☐ Yes

Mark 4 Setting
☒ Gate ☐ Mark ☐ None

Start-line location
Below bottom mark(s)

Finish-line location
Starboard of start boat

Finish-line length (m)
50

Finish distance 2/4
☒ Auto ☐ Manual

Gate width (m)
60

Gate/bottom mark offset (nm) 2/4
0.05

Below bottom mark(s)
Middle of beat
1/3 up beat
1/4 up beat

Same as start
Reach LR
Reach LG
Starboard of start boat
Starboard of start boat perpendicular to gate
Above top mark



How to set up a new racecourse - Boat / Course Setting

Enter start vessel name and skipper name.

Select to share with Club.

Set the course and open Map.

Course settings
Royal Brighton Yacht Club

Gate width (m)
60

Gate/bottom mark offset (nm)
0.05

Race Officer Settings

Start vessel name *
Harry Tedstone

Race Officer
Rod McKenna

Mobile number
0416190944

☐ Sync to MarkSetBot?

☐ Set as a club template?

☒ Shared with club

CANCEL SET COURSE

Shows details of people logged onto course.

Shows your current location.

Centres' Start Boat on Chart.

Choose between: Map Layers

- Club Features On / Off
- Satellite View: On / Off

Course Alert: choose between
Man Overboard
Assistance Requested
Medic Request.
This will notify all boats on the course.

Here you can adjust your racecourse settings.

RBVC2TEST 1

114°M
COMPASS

180°M
COURSE AXIS

0.8NM
COURSE SIZE



How to get started with Buoy Zone – Mark Layer

Create an account

Step 1 of 2

Sign in with Google

Or register with email and password

Email

Password

Confirm password

CANCEL REGISTER

Step 2 of 2

Name

Email
testname@testemail.com.au

EMAIL NOT VERIFIED

RESEND VERIFICATION EMAIL

Country

Search for your club

Royal Brighton Yacht Club

Short distance units

Feet Yards Meters

Long distance units

Kilometers Miles Nautical Miles

Delete my account

CANCEL UPDATE

- Download the app “Buoy Zone” from app store.
- Register using your Google or Apple account – or create a new account.

- Input your personal Details.
- Search for RBYC and link your account to the club.

Join a Course

RM RBYC

JOIN A COURSE

MANAGE A COURSE

Race Officer

2.6.0 (258)

RBYC Courses

Royal Brighton Yacht Club

CHANGE HOST CLUB

Select a course from the list

RM RBYC2TEST (WINDWARD LEEWARD) 25 minutes ago

SHOW OLDER COURSES

Join course

Join a vessel or location already on the course, or add a new one.

Harry Tedstone

Committee Boat

JOIN

CANCEL ADD NEW

- Join a course by clicking “Join a Course”.

- Select a Course. Select Plus Sign.
- This screen also allows you to change host club.
- If course not shown Select “Show Older Courses”

- Select existing vessel. Or
- Select “Add New” Vessel.



How to get started with Buoy Zone – Mark Layer Cont.

The image displays three sequential screenshots of the Buoy Zone mobile application interface, illustrating the steps to join a course and manage map layers.

Join course screen: The first screenshot shows the 'Join course' screen for the course 'RBYC2TEST'. It includes fields for 'Vessel name *' (filled with 'Test Boat 2'), 'Your name *', and 'Mobile number'. A 'CANCEL' button and a 'JOIN' button are at the bottom.

Mark Layer selection screen: The second screenshot shows the 'Mark Layer' selection screen for 'RBYC2TEST'. It lists various roles: Mark Vessel, Safety, Umpire, Official, Coach, Spectator, Competitor, Other, Official (onshore), and Spectator (onshore).

Map Layer view: The third screenshot shows the 'Map Layer' view for the course 'RBYC2TEST'. It displays a map with a compass reading '045°M', a course axis of '180°M', and a course size of '0.8NM'. A boat icon is visible on the map.

Annotations:

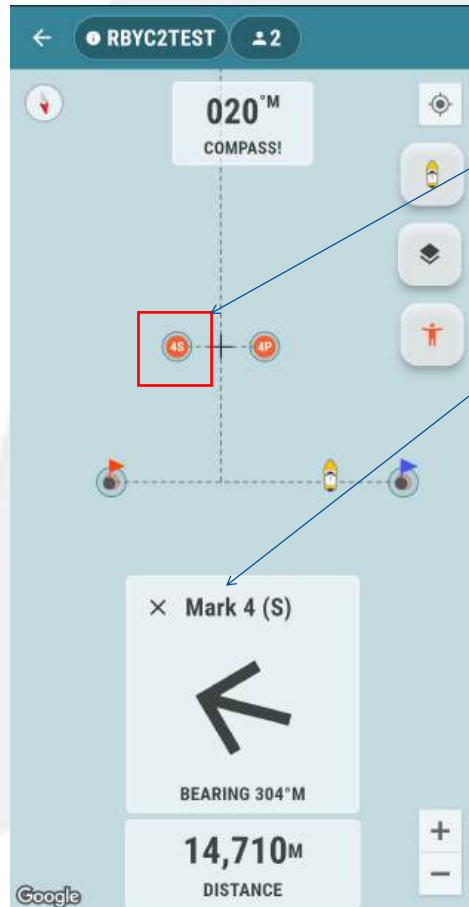
- Shows details of people logged onto course.
- Shows your current location.
- Centres' Start Boat on Chart.
- Choose between: Map Layers
 - Club Features On / Off
 - Satellite View: On / Off
- Course Alert:** choose between Man Overboard Assistance Requested Medic Request. *This will notify all boats on the course.*

- Enter Vessel Name
- Enter Your Name
- Enter Your Mobile #.
- Select Type of Vessel from list.

- Input your personal Details.
- Search for RBYC and link your account to the club.



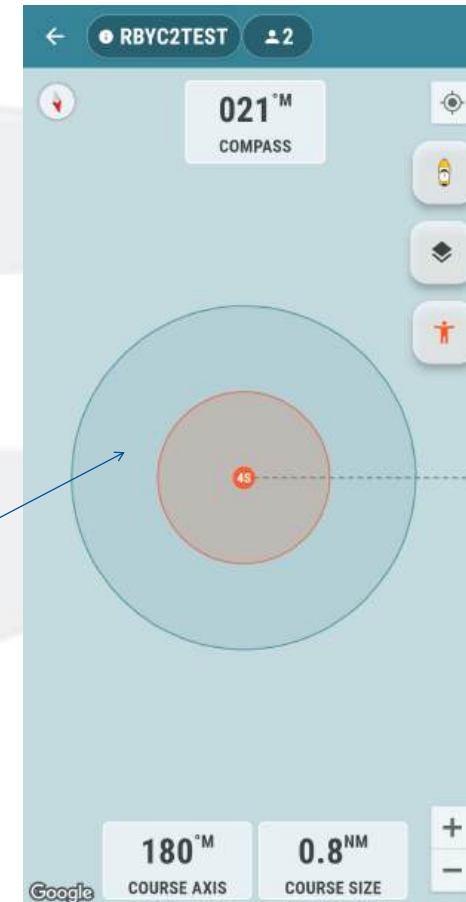
How to get started with Buoy Zone – Mark Laying.



Click on the mark you are supposed to lay.

Directions on Buoy Zone will lead you to the mark.

Zoom in as you get closer to the mark; you want to be as close as possible to the mark – meaning your RIB needs to be inside the red circle (5m) when you drop the mark.





How to Create a Course Template – Club Admin

Buoy Zone makes it even easier to improve the experience for sailors and race officers by making it possible for clubs to save the course formats and locations they like to use through the Club Templates feature. This feature is currently available for a limited time to all, but will be limited to all clubs who have a Buoy Zone Club Subscription.

Using the Club Template feature:

Creating new template:

To create Club Templates, follow these simple steps.
From the landing screen select “Manage a Course”

Either select an existing course or create a new one. Remember, make sure your course, whether existing or new, is associated with the host club you intend to create the template for.

Set your course settings as you would like to see them saved as a Template.

Tip: if you would like your Template course to be saved in a specific location rather than the dynamically updated GPS location of the RO then change the “start boat location” setting to “Manual course Location.” If you’re reusing an existing course the coordinates will be where you last set the course. If you have created a new course the coordinates will default to your current location, but you can change them.

Select the Advanced Courses settings and scroll to the bottom, check the “Set as a club template” field.

Enter a name for the new Template - this is how the template will be displayed.

Tap “Set Course” to save and view the template.



How to Create a Course Template – Club Admin cont.

Using a Club Template:

The Club Templates are available to all Race Officers who select a host club which has saved template(s). Remember when you select from a template course you receive a copy of that template course which you can adjust and edit to make your own, with no worry that you will change the saved “Club Template”.

From the landing screen select “Manage a Course”
From the next screen select the + button (Bottom right) to create a new course
Choose the Host Country and Club you are creating a course for
Select a template course from the “Club course template” drop down.

The “Course settings” screen allows you to fully adjust the course settings, the template settings are pre-loaded including the course location if the “Start boat location” has been set to “Manual course location”. Tap “Set Course” to view the course.



COURSE ALERTS AND MORE!

Course Alerts

A feature which we think offers a real innovation for on-water sports and race management.

This will be especially helpful in the case of general assistance requests, man-over boards, or urgent medic requests. If activated, a notification is sent to all Buoy Zone users who have joined or managed the course in the last 12 hours and alerts them to an assistance request with a location and 'navigate to' function.

"This is an area of innovation we haven't seen before for on-water sports, where traditionally communications are completely reliant on VHF/Radio,"

We don't see Buoy Zone replacing VHF, but we do believe it will expand the range of tools typically used by race officials and be a valuable way to share more specific details and identify those best placed to respond.

Using the Assistance request

On the map view select the symbol on the right which looks like a person with their arms out

On the pop-up screen select the alert type you're looking for (Man overboard, Assistance Request or Medic Request)

Tap the "Activate" button.

This will send a notification to anyone who is or has been active on the course.

To deactivate the Course Alert the individual user or the Race Officer has the option to deactivate the alert from the alert banner on the map screen.



COURSE ALERTS AND MORE! cont.

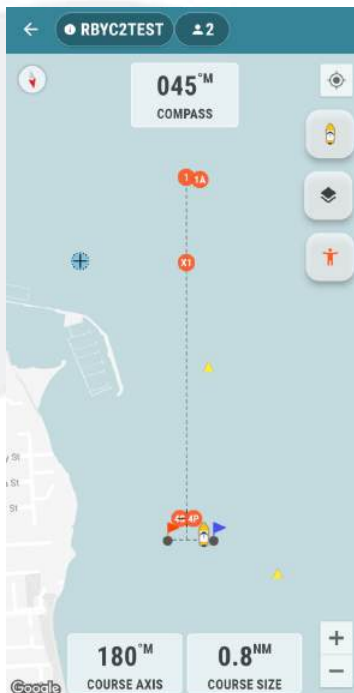
Join As

This applies to those who are joining a course requiring them to select the role under which they are joining the course. These roles include Mark Vessel, Safety, Umpire, Official, Coach, Spectator, Competitor and Other. The roles all have a unique colour and are reflected throughout, including on the map view and list view.

As time goes by we see more and more users joining a course for different reasons, some playing and active role and managing a course and others just to observe. The goal through this addition is to allow anyone at a glance to see the role of each boat on the course by colour and descriptor.

Refreshed Map Buttons

The map buttons have been refreshed to include collapsed menu options within. The icons from the top are:



The map buttons include collapsed menu options within. The icons from the top are:

Centre over start boat

Map Layers toggle

Satellite image - toggle between satellite view and standard map views

Club features toggle on/off

Course Alert



CLUB FEATURES - MAP LAYER – Club Admin.

Club Features - Race Management-Oriented Charts

Clubs with an active Club Subscription can add key details to their map for all those who join to be able to see. These features include standard chart-based symbols such as Marker buoys, Beacons, Lighthouses, rocks etc as well as marks and way-points specific to club activities. The focus is not on replacing navigational charts, rather allowing details relevant to course setting activities to be visible and available to those who need it.

Using Club Features

To begin adding Club Features click through to “Manage a Course” from the main landing screen.

On the next screen (My Courses), at the top right select “Club Features” then tap the big Orange + Button to begin creating a feature.

When selecting the location of a feature it is possible to manually add a coordinate or view the map and scroll to the right location by tapping “Select on Map”.

Note you may find it useful to toggle on the satellite view layer.

There are options to deactivate features individually if not required, for example clubs may have specific regatta-based waypoints which are not always required.

Select Manual Locations On The Map

Wherever you are able to select the location of an item EG Manual course location, Club Feature you have the option to click “select on map” and then select the location you’re looking for on the map.

This in addition to the ability to add in both specific coordinates where these are known.

Note all Club Features are selectable - so for example if you have a mooring or regular course location saved as a Club Feature you can select this as the location of the start boat for the course.

Produced by:

Royal Brighton Yacht Club, Race Committee

www.rbYC.org.au