



# Supplementary Sailing Instructions for the Alan Robinson Trophy Race (PHS) Saturday June 10th, 2023

The race will be governed by the current version of the [RBYC Sailing Instructions](#) except as amended below:

## 1. Rules are amended as follows:

- 1.1. The regatta will be governed by the rules as defined in The Racing Rules of Sailing (RRS)
- 1.2. The Prescriptions and Special Regulations of Australian Sailing (AS) will apply
- 1.3. The AS Keelboat Handicap Rule (PHS) will apply.

## 2. The Courses are replaced by:

### Course 1

Start in a southerly direction.  
RBYC 1 to Starboard - Finish.

### Course 2

Start in a northerly direction.  
Start – RBYC 5 (Port) – Finish.

The Race Committee shall designate the Course to be sailed at the warning signal by displaying the Numeral Pennant corresponding to the Course number.

## 3. Schedule of Race

- 3.1. The race will be conducted on the 10th of June 2023
- 3.2. The time of the first warning signal will be 09:55.

## 4. Marks is replaced by:

### **Mark Approximate Position (Guide Only)**

RBYC 5 37° 53'.81 S 144° 58'.46 E

RBYC 6 37° 54'.35 S 144° 58'.53 E

West Channel Mark 13 38° 11.9 S 144°45.9 E

West Channel Pile 38° 11.3 S 144°45.2 E

## 5. The Start is replaced by

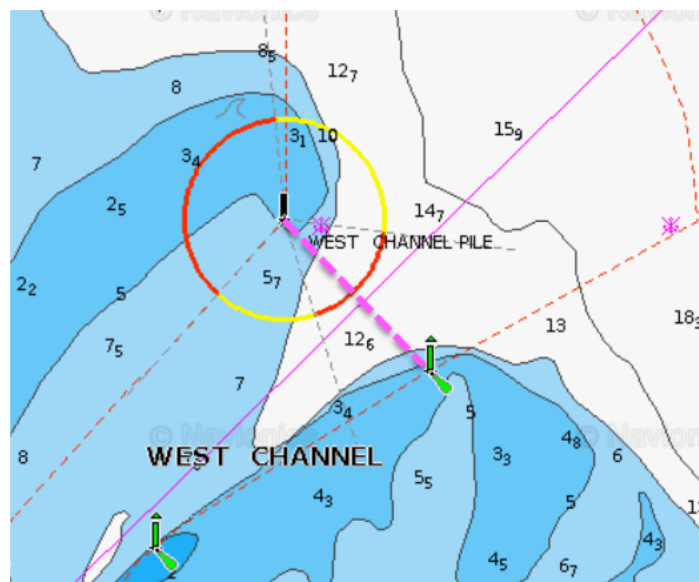
The starting line will be as follows:

- 5.1. The starting line will be between the black vertical line displayed on the western side of the Race Control Tower, and the starting mark, (RBYC 6).
- 5.2. A crowding mark may be laid off the breakwater. When laid, this mark shall be considered an extension of the Race Control Tower.
- 5.3. A boat starting later than 15 minutes after her starting signal will be scored DNS without a hearing. This changes RRS A4.

## 6. The Finish is replaced by:

The Finish line will be between the West Channel Pile and West Channel Mark No. 13. Competitors are required to take their own finishing time.

- 6.2. No finishing signal will be made.
- 6.3. Competitors are required to call QCYC on VHF CH.82 or text 0429 982 832 immediately after finishing to report their finishing times.



## 7. Time Limits is replaced by

- 7.1. The time limit is 1630hrs.
- 7.2. Any boat that has not finished before the time limit expires will be scored DNF. This changes RRS 35, A4 and A5.

## 8. Radio Communication is replaced by

Each boat shall carry a VHF radio capable of transmitting on Ch 16, 77 & Repeater Channel 82. (Operators using VHF equipment equipped with an 'International' or 'AUS' channel switch should note that it is essential that the switch be in the 'International' or 'AUS' position to access repeaters.)

- 8.2. Except in an emergency, a boat shall neither make radio transmissions while racing nor receive radio communications not available to all boats. This restriction also applies to mobile telephones.

8.3. QCYC Race Control will monitor VHF Channel 82 during the race.

8.4. All boats shall monitor Channel 82 during the race.

## 9. Commercial Shipping

Competitors are advised of the following Port of Melbourne Authority requirements:

9.1. dredgers and avoid impeding the safe passage of shipping using the shipping It is a requirement for participants to keep clear of commercial shipping and channels, in accordance with section 2.18, of the PoMC HMD – ‘Small Vessels’.

9.2. Competitors shall not cross commercial shipping channels where such crossing would interfere with the passage of commercial shipping or be so close as to cause concern for commercial shipping.

9.3. Competitors are required to report any incident, hazard, or obstruction, as soon as reasonably practical, to ‘Melbourne VTS’ for incidents north of 38°05’S and ‘Lonsdale VTS’ for incidents south of 38°05’S on VHF Channel 12.

9.4. It is the responsibility of competitors to always keep clear of commercial shipping.

9.5. Boats that find themselves in danger of interfering with commercial shipping may use their engine to avoid interference and will not be penalised under RRS 42 provided that:

9.6. It is used only as necessary to avoid the commercial shipping in question.

9.7. No advantage is gained through its use.

9.8. A declaration containing a complete description of the circumstances is submitted to the Race Committee within the protest time limit. This alters RRS 42.

## 10.SAFETY

**10.1. All boats are required to contact RBYC Race Control between 0930 and 0945 hours on VHF Channel 77 to:**

- **Confirm they are a starter.**
- **State the number of People on Board (POB).**
- **Confirm they comply with AS Special Regulations Part 1 Category 5.**

10.2. Boats failing to make contact via VHF Channel 77 shall not be eligible to race and shall be scored DNS without a hearing. This changes A4 and A5.

10.3. Any boat retiring or not finishing the race shall contact QCYC Race Control on Channel 82 or by telephone (03) 5258 1692 before the race time limit.

## 11. OTHER INFORMATION

RBYC boats sailing in the Alan Robinson Trophy Race and wishing to stay overnight at QCYC are required to book their berthing via the following link:

<https://form.jotform.com/212868588542874>

**RBYC boats planning to sail back on the day must report in to RBYC race control via text message to 0418 340 313 with POB and ETA and then again when arriving at RBYC. This will be monitored until 1130 pm.**