

MEMBERSHIP APPLICATION

SAILING MEMBERSHIPS

- ☐ SENIOR
- ☐ SENIOR FAMILY
(ONE FORM PER PERSON)
- ☐ CREW
- ☐ CREW PLUS
- ☐ COUNTRY
(PERMANENT RESIDENCE MORE THAN 100KM FROM CLUB)
- ☐ INTERMEDIATE (18 – 29YRS)
- ☐ YOUTH (TO 17YRS)
(PLEASE PROVIDE PARENT/GUARDIAN MOBILE/EMAIL DETAILS)

NON-SAILING MEMBERSHIPS

- ☐ GYM
- ☐ ICEBERGER**
- ☐ SOCIAL

APPLICANT’S FULL NAME

ADDRESS

PHONE (HOME) (BUSINESS) (MOBILE)

EMAIL

DATE OF BIRTH / / OCCUPATION

HOW DID YOU HEAR ABOUT THE CLUB?

NEXT OF KIN (HOME) (MOBILE)

DO YOU HAVE AN AS NO? # DO YOU INTEND TO ACTIVELY SAIL? ☐ YES ☐ NO

DETAILS OF VESSEL YOU OWN OR PROPOSE TO ACQUIRE

PREVIOUS YACHTING OR BOATING EXPERIENCE

DO YOU HAVE ANY PARTICULAR EXPERTISE OR SKILLS YOU COULD CONTRIBUTE TO THE CLUB?

I HEREBY APPLY FOR MEMBERSHIP OF THE ROYAL BRIGHTON YACHT CLUB, WHICH INCLUDES AN ANNUAL COMMITMENT. IF ELECTED I AGREE TO BE GOVERNED BY THE CLUB’S RULES, REGULATIONS AND BY-LAWS. I DECLARE THAT THE INFORMATION HEREIN SUPPLIED IS TRUE AND CORRECT. THE RBYC MEMBERSHIP OFFER COMPRISES AUTOMATIC ROLLOVER OF MY MEMBERSHIP NOTING RESIGNATION WILL BE EFFECTIVE UPON WRITTEN NOTIFICATION AND FEES PAID UNTIL THE END OF THE CURRENT FINANCIAL YEAR.

NAME (PARENT/CARER IF U18) SIGNATURE DATE

PROPOSER (SENIOR MEMBER* 1 YEAR) I HAVE KNOWN THE APPLICANT FOR YEARS

NAME & SIGNATURE OF PROPOSER

COMMENTS

SECONDER (SENIOR MEMBER 1 YEAR) I HAVE KNOWN THE APPLICANT FOR YEARS

NAME & SIGNATURE OF SECONDER

COMMENTS

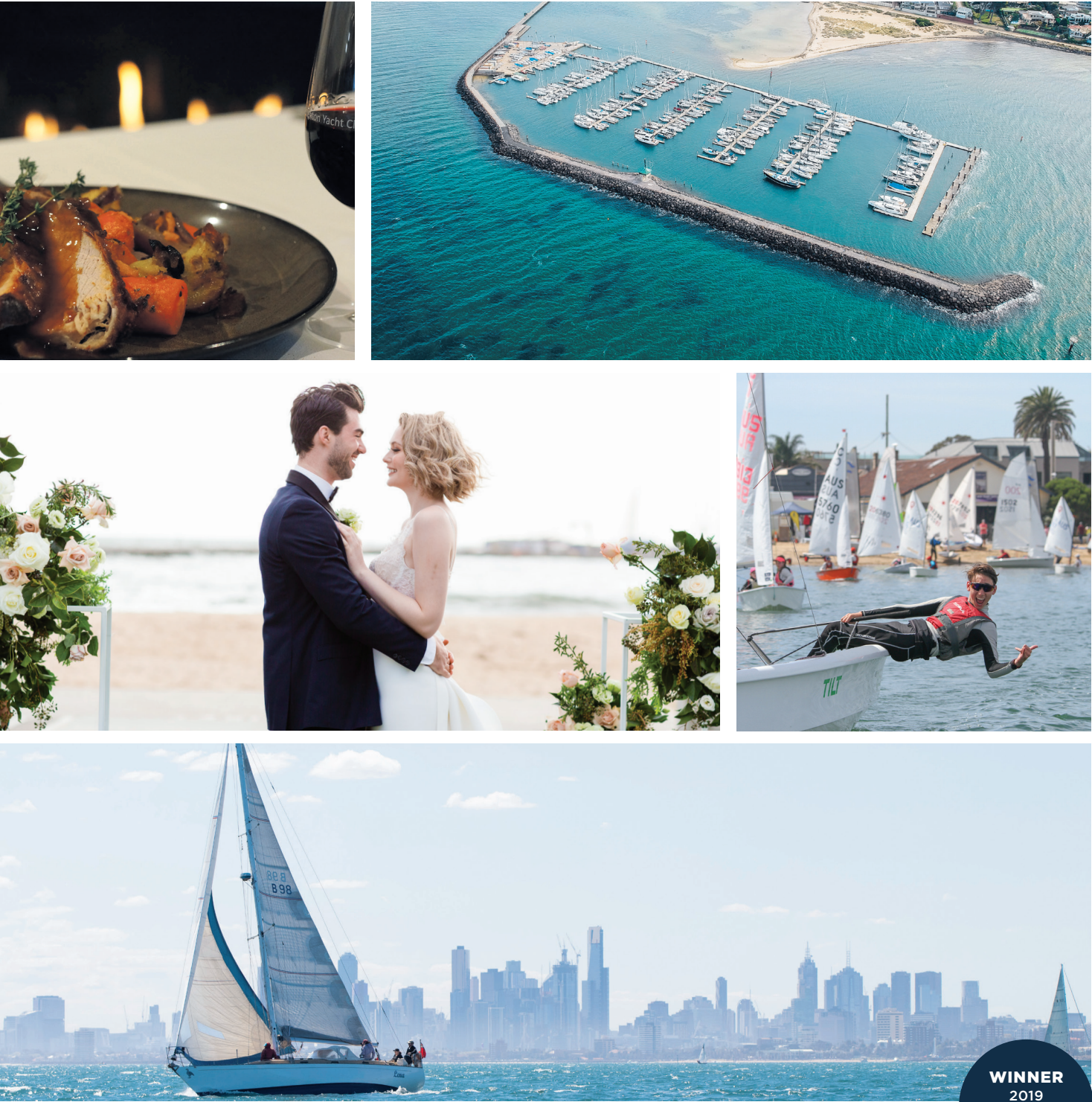
*IF YOU DO NOT KNOW A SENIOR MEMBER, WE WILL HELP YOU FIND SOMEONE TO SUPPORT YOUR APPLICATION.
**NOTE: NEW ICEBERGER MEMBERS NEED PROPOSER & SECONDER TO BE A SENIOR MEMBER WHO IS ALSO AN ICEBERGER.



INCLUDED IN THE ABOVE FEES FOR SAILING MEMBERS IS THE COST OF YOUR AUSTRALIAN SAILING MEMBERSHIP AND ITS BENEFITS INCLUDING PERSONAL INJURY INSURANCE, AND A CONTRIBUTION TOWARDS THE COST OF MAINTAINING THE CLUB’S SAFETY BOATS AND EQUIPMENT.

THE
ROYAL BRIGHTON
YACHT CLUB

More than just a Yacht Club



MEMBERSHIP INFORMATION



SAILING MEMBERSHIPS

SENIOR MEMBERSHIP	
Full use of all Club facilities	On-site carpark <i>subject to availability</i>
Gym/steam room/sauna	50% discount on function room hire
Reciprocal rights	Voting Rights
10% discount on all food and beverages*	Free Wifi
Eligible for Marina Berth/Hardstand/ General boat storage <i>(contact Club for availability information)</i>	
<i>A Senior Member may join their partner as Social Spouse member*</i> <i>(no membership fee whilst accompanied by a full Senior Member – Levy and fob key charge apply)</i> <i>*see Social Membership inclusions</i> <i>If you permanently live more than 100kms away from the club, enquire about our Senior Country Membership.</i>	
11 PAYMENTS OF \$121.93 per month plus a \$200 upfront levy to use on food/beverages & club merchandise OR \$1511 p/a including a \$200 upfront levy to use on food/beverages & club merchandise <i>(One off: \$33 fob key + \$26 metal key charge applies) *excludes functions</i>	

SENIOR FAMILY MEMBERSHIP	
Husband, wife/partner & children under 21 yrs	
Full use of all Club facilities	On-site carpark for both Senior Family Members <i>subject to availability</i>
Gym/steam room/sauna (18yrs + only)	50% discount on function room hire
Reciprocal rights	Voting Rights
10% discount on all food and beverages*	Free Wifi
Eligible for Marina Berth/Hardstand/ General boat storage <i>(contact Club for availability information)</i>	
No membership fee for family member under 21 yrs. <i>However, \$57 Association fee per child + key charges apply (18yrs+)</i>	
11 PAYMENTS OF \$95.13 per month per adult plus a \$200 upfront levy to use on food/beverages & club merchandise OR \$1,222 p/a per adult including a \$200 upfront levy to use on food/beverages & club merchandise <i>(One off: \$33 fob key + \$26 metal key charge applies) *excludes functions</i>	

CREW MEMBERSHIP	
Sailing, racing as crew	Members’ Lounge
Reciprocal rights	50% discount on function room hire
10% discount on all food and beverages*	Free Wifi
11 PAYMENTS OF \$68.15 per month plus a \$200 upfront levy to use on food/beverages & club merchandise OR \$931 p/a including a \$200 upfront levy to use on food/beverages & club merchandise <i>(One off: \$33 fob key + \$26 metal key charge applies) *excludes functions</i>	

CREW PLUS MEMBERSHIP	
Sailing, racing as crew	Members’ Lounge
Gym/steam room/sauna	50% discount on function room hire
Reciprocal rights	Free Wifi
10% discount on all food and beverages*	
11 PAYMENTS OF \$95.13 per month plus a \$200 upfront levy to use on food/beverages & club merchandise OR \$1,222 p/a including a \$200 upfront levy to use on food/beverages & club merchandise <i>(One off: \$33 fob key + \$26 metal key charge applies) *excludes functions</i>	

SAILING MEMBERSHIPS

CONTINUED

INTERMEDIATE MEMBERSHIP (18yrs to 29yrs)	
Sailing/racing	Members’ Lounge
Gym/steam room/sauna	25% discount on function room hire
Reciprocal rights	Free Wifi
10% discount on all food and beverages*	
11 PAYMENTS OF \$27.90 per month plus a \$50 upfront levy to use on food/beverages & club merchandise OR \$350 p/a including a \$50 upfront levy to use on food/beverages & club merchandise <i>(One off: \$33 fob key + \$26 metal key charge applies) *excludes functions</i>	

YOUTH MEMBERSHIP (to 17yrs)	
Sailing/racing	Free Wifi
Eligible to participate in youth training courses	Eligible for dinghy storage
\$174 p/a	

NON-SAILING MEMBERSHIPS

GYM MEMBERSHIP	
24hr access to gym/steam room/sauna	Members' Lounge
10% discount on all food and beverages*	50% discount on function room hire
Reciprocal rights to other relevant clubs	Free Wifi
11 PAYMENTS OF \$92.63 per month plus a \$200 upfront levy to use on food/beverages & club merchandise OR \$1,195 p/a including a \$200 upfront levy to use on food/beverages & club merchandise <i>(One off: \$33 fob key charge applies) *excludes functions</i>	

ICEBERGER MEMBERSHIP	
Steam-room/sauna/change room facilities	Members' Lounge
10% discount on all food and beverages*	50% discount on function room hire
Reciprocal rights to other relevant clubs	Free Wifi
11 PAYMENTS OF \$54.33 per month plus a \$200 upfront levy to use on food/beverages & club merchandise OR \$782 p/a including a \$200 upfront levy to use on food/beverages & club merchandise <i>(One off: \$33 fob key charge applies) *excludes functions</i>	

SOCIAL MEMBERSHIP	
10% discount on all food and beverages*	Members' Lounge
Free Wifi	25% discount on function room hire
Reciprocal rights to other relevant clubs	
11 PAYMENTS OF \$21.97 per month plus a \$200 upfront levy to use on food/beverages & club merchandise OR \$433 p/a including a \$200 upfront levy to use on food/beverages & club merchandise <i>(One off: \$33 fob key charge applies) *excludes functions</i>	